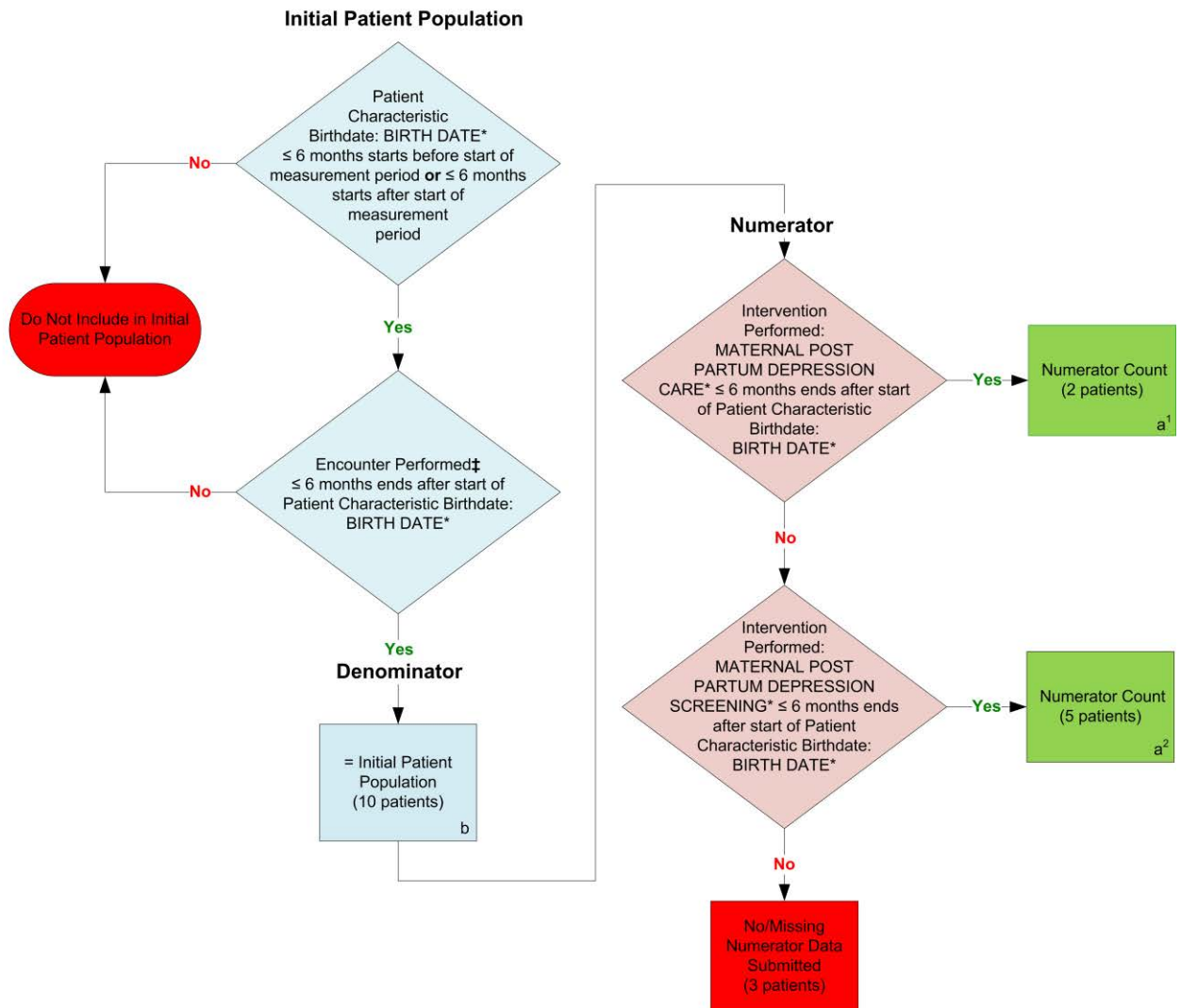


2014 eCQM Flow
Measure Identifier: CMS82v2
NQF 1401: Maternal Depression Screening



*Please refer to the specific section of the eCQM to identify the QDM data elements and associated value sets for use in reporting this eCQM.

‡ For a listing of appropriate encounters, please refer to the QDM data elements and associated value sets as specific data elements have not been listed.

SAMPLE CALCULATION:

Performance Rate =

$$\frac{\text{Numerator (a}^1 + \text{a}^2 = 7 \text{ patients)}}{\text{Denominator (b=10 patients) - Denominator Exclusions (N/A) - Denominator Exceptions (N/A)}} = 70.00\%$$

2014 eCQM Flows
Measure Identifier: CMS82v2
NQF 1401: Maternal Depression Screening

Please refer to the specific section of the eCQM to identify the QDM data elements and associated value sets for use in reporting this eCQM.

1. Start Initial Patient Population
2. Check Patient Characteristic Birth Date:
 - a. If QDM data element, BIRTH DATE, less than or equal to 6 months starts before start of measurement period or less than or equal to 6 months starts after start of measurement period, equals Yes, proceed to check Encounter Performed.
 - b. If QDM data element, BIRTH DATE, less than or equal to 6 months starts before start of measurement period or less than or equal to 6 months starts after start of measurement period, equals No, do not include in Initial Patient Population. Stop Processing.
3. Check Encounter Performed:
 - a. If the QDM data element, OFFICE VISIT, less than or equal to 6 months ends after start of the QDM data element, BIRTH DATE, equals Yes, include in the Initial Patient Population and continue on to the Denominator.
 - b. If the QDM data element, OFFICE VISIT, less than or equal to 6 months ends after start of the QDM data element, BIRTH DATE, equals No, proceed to check next Encounter Performed.
 - c. If the QDM data element, FACE-TO-FACE INTERACTION, less than or equal to 6 months ends after start of the QDM data element, BIRTH DATE equals Yes, include in the Initial Patient Population and continue onto the Denominator.
 - d. If the QDM data element, FACE-TO-FACE INTERACTION, less than or equal to 6 months ends after start of the QDM data element, BIRTH DATE, equals No, proceed to check next Encounter Performed.
 - e. If the QDM data element, BH MEDICAL OR PSYCHIATRIC CONSULTATION, less than or equal to 6 months ends after start of the QDM data element, BIRTH DATE equals Yes, include in the Initial Patient Population and continue on to the Denominator.
 - f. If the QDM data element, BH MEDICAL OR PSYCHIATRIC CONSULTATION, less than or equal to 6 months ends after start of the QDM data element, BIRTH DATE, equals No, do not include in the Initial Patient Population. Stop Processing.
4. Start Denominator
 - a. Denominator equals the Initial Patient Population. Denominator is represented by letter B in the sample calculation listed at the end of this document. Letter B equals 10 patients in the sample calculation.

5. Start Numerator

6. Check Intervention Performed:
 - a. If the QDM data element, MATERNAL POST PARTUM DEPRESSION CARE, less than or equal to 6 months ends after start of the QDM data element, BIRTH DATE, equals Yes, include in the Numerator Count. Numerator is represented by letter A in the sample calculation listed at the end of this document. Letter A¹ equals 2 patients in the sample calculation. Stop Processing.
 - b. If the QDM data element, MATERNAL POST PARTUM DEPRESSION CARE, less than or equal to 6 months ends after start of the QDM data element, BIRTH DATE, equals No, check next Intervention Performed.
7. Check Intervention Performed:
 - a. If the QDM data element, MATERNAL POST PARTUM DEPRESSION SCREENING, less than or equal to 6 months ends after start of the QDM data element, BIRTH DATE, equals Yes, include in the Numerator Count. Numerator is represented by letter A in the sample calculation listed at the end of this document. Letter A² equals 5 patients in the sample calculation. Stop Processing.
 - b. If the QDM data element, MATERNAL POST PARTUM DEPRESSION SCREENING, less than or equal to 6 months ends after start of the QDM data element, BIRTH DATE, equals No, include in the No/Missing Data Submitted count. Stop Processing

SAMPLE CALCULATIONS

Performance Rate =

Numerator (a¹+a²=7 patients)

÷

Denominator (b=10 patients) – *Denominator Exclusions (N/A)* – *Denominator Exceptions (N/A)*

= 70.00%